

ACCU-CHEK®
Guide

Get a
FREE*
Accu-Chek Guide meter!

Speak to a pharmacist to get your **FREE***
Accu-Chek Guide meter.
Plus, unlock **mySugr® PRO** for **FREE****



Connects with  mySugr®

Trusted by more than 5 million registered users
worldwide.¹

“Outstanding and efficient...
...mySugr allows me to track my necessary data in a concise, intuitive and paperless format. I especially appreciate the easy-to-see trending chart. Oh, and did I mention paperless! Good for me and the environment. Win-win!”

App Store user | August 2020



Download the mySugr app now!



Accessible via smart devices, compatible with:

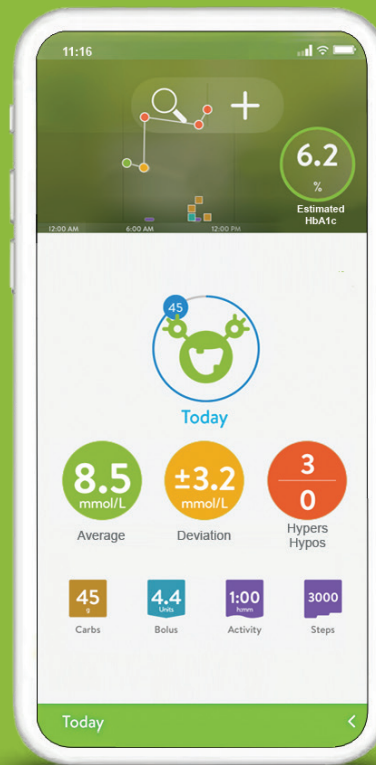


Apple Health® (iOS)



Google Fit® (Android)

mySugr®
All your diabetes data
in one place!



Take your diabetes management to the
next level.

The mySugr app includes advanced features that let you add pictures of what you eat and drink to help you understand how food intake influences your blood sugar levels, and extract and share reports with your health care team!

Get mySugr PRO for **FREE**** when you connect and import blood sugar values from your Accu-Chek Guide meter!
(Value of \$37.99 per year)

mySugr app	Basic	PRO
Personalized Logging	✓	✓
Estimated HbA1c [†]	✓	✓
Reports	CSV	CSV, PDF, Excel
Meal Photos		✓
Blood Sugar Reminders		✓
Empowering Challenges		✓

and much more!

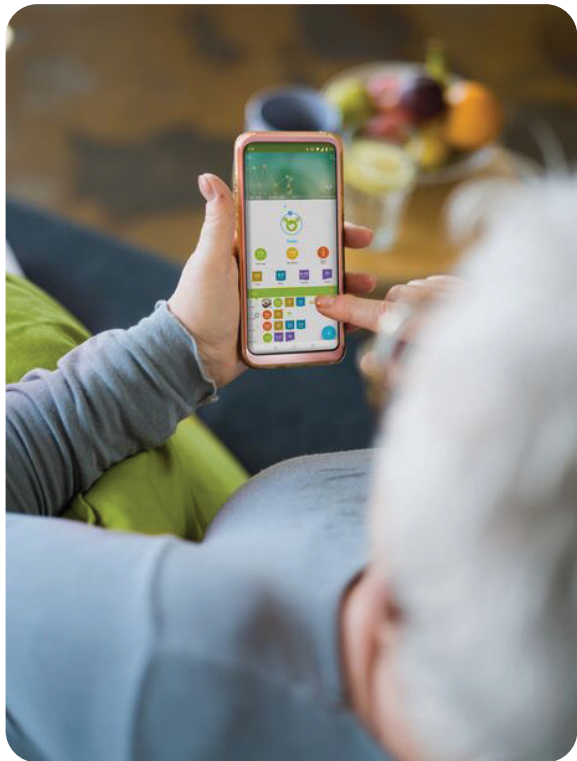
*With the purchase of Accu-Chek Guide strips. | **Download mySugr and access more features with mySugr PRO when you connect and import blood sugar values from your Accu-Chek Guide meter (value of \$37.99 per year). In order to maintain access to all PRO features, you must transfer your blood sugar values at least once every 30 days.

1. As of June 19, 2023.
2. Average app rating in App Store and Google Play Store worldwide, 2023-03-01, 2023-05-31.

[†]Estimated HbA1c is based on your logged or imported measurements and does not replace actual HbA1c measurements. To get your eHbA1c, you must log or import your blood sugar levels 3 times a day for 7 days.

There for you, anytime,
anywhere.

mySugr knows diabetes. It was designed for people with diabetes, by people with diabetes.



The mySugr app will be right by your side throughout your diabetes journey, helping you stay motivated, confident, and ready to tame the monster!

You don't have to do diabetes alone!



Learn more
Visit [mySugrApp.ca](https://mysugrapp.ca)


Diabetes management just got easier
with mySugr!



- **Motivating feedback**
Challenges and feedback to keep you going.
- **Quick, easy logging**
Track blood sugar, meals, activity and more.
- **Smart blood glucose graphs**
Get deep insights into your diabetes data with instant analysis of the last 7, 14, 30 and 90 days.
- **Estimated HbA1c[‡]**
A useful tool to help keep you on track.

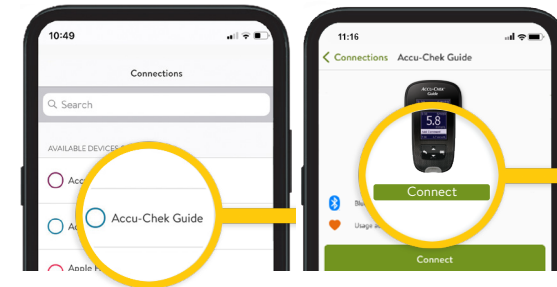
[‡]Estimated HbA1c is based on your logged or imported measurements and does not replace actual HbA1c measurements. To get your eHbA1c, you must log or import your blood sugar levels 3 times a day for 7 days.

Getting started with mySugr and Accu-Chek Guide:

- 1 Enable Bluetooth  on your smart device.
- 2 Select "Connections" from the menu.



- 3 Select "Accu-Chek Guide" and click on "Connect."



- 4 Turn on the Accu-Chek Guide meter and go to your "Settings."
- 5 Select "Wireless" and press "OK." Then select "Pairing" and press "OK." Then select "Pair Device" and press "OK."
- 6 Enter the code displayed on your meter into the notification on your smart device and confirm the pairing.
- 7 Return to "Wireless" in your meter settings and turn on "Auto-Send" to allow future blood sugar levels to be automatically transferred to the mySugr Logbook.

Roche

The perfect pairing!

Discover the **Accu-Chek[®] Guide** system



Accu-Chek Guide syncs quickly with the mySugr app.

Pair it once and your values will be transferred automatically from your meter into the app. Knowing your blood sugar levels and monitoring your data has never been so simple!

accu-chek.ca

ACCUCHEK GUIDE and MYSUGR are trademarks of Roche.
APPLE, the APPLE logo, APP STORE and APPLE HEALTH are trademarks of Apple Inc.
Android, Google Play, the Google Play logo and Google Fit are trademarks of Google LLC.
© 2023 Roche Diabetes Care. CA-1747 10066466001